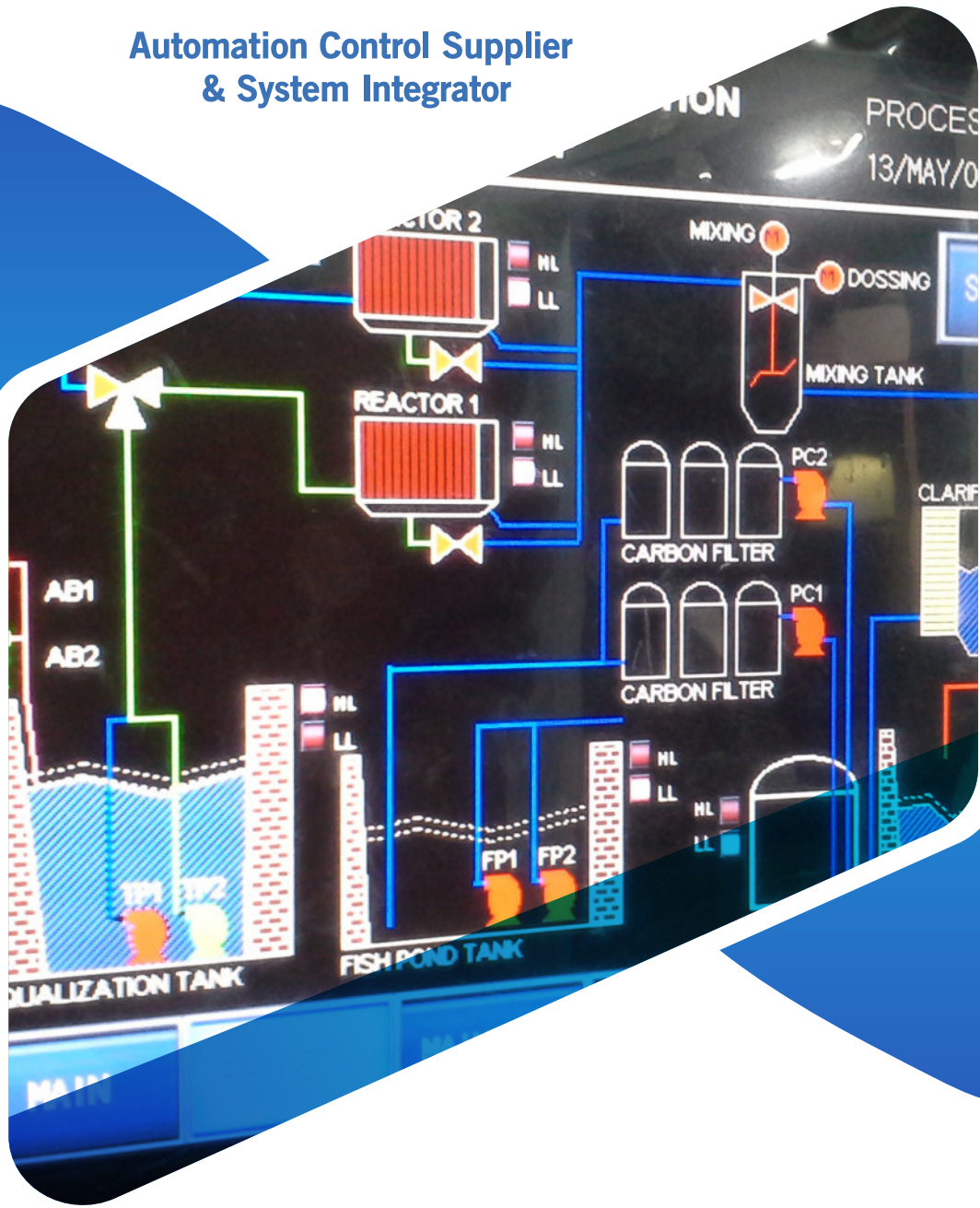




Automation Control Supplier
& System Integrator



Company Profile

PT. Savisi Jaya Solusi

Our Office

Perum Permata Buah Batu Blok G No.30 Bojong Soang,
Kabupaten Bandung, Indonesia

Phone +62(22) 8750-8008 - Email: sales@savisi.co.id

About Us

Savisi Jaya Solusi

Savisi Jaya Solusi is an integrated Indonesian Automation Company. Savisi Jaya Solusi has constantly offered the best solutions for automation industry in Indonesia.

Savisi Jaya Solusi provides full range of technical and projects management skills to assist clients in supplies automation parts, design, troubleshooting and various solution for automation system in various sectors: automotive, food and beverage, pharmacy, petrochemical, etc.



Our Vision

To be a leading company providing automation solutions through excellent multidiscipline services.



Our Mission

- ▶ Increasing local and international market expansion.
- ▶ Improving satisfaction and maintain good relationship with our business partners on a mutually beneficial basis.
- ▶ Offer comprehensive solutions that fully meet the requirements of our clients.

savisi
PT. Savisi Jaya Solusi



Business Services



Industrial Automation and Design



Drives and Transmission



Multi Brand Interconnecting



Automation Training



System Integrator



SCADA (Supervisory Control and Data Acquisition)

Our Product



Industrial Control Automation

- ▶ *Smart Relay*
- ▶ *PLC*
- ▶ *HMI*



Human Machine Interface



AC Motor Speed Control

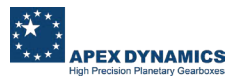
- ▶ *Inverter*
- ▶ *Speed Control Motor*





Motion & Transmission

- ▶ Servo Motor
- ▶ Stepping Motor
- ▶ Motorized Actuator
- ▶ Linear Motor
- ▶ Transmission Component



Industrial Robot



SCADA Software

A₂I₂OTKU



SCADA - A₂I₂OTKU

“Automation, AI and IoT System Solutions,
We use Internet for everything.
Try and feel the difference”



Industrial IOT Automation



IOT Data Center and Reporting



Industrial IOT QR-Code Gateway



IOT Monitor and Alert Systems



Automatic Social Media Chat-Bot



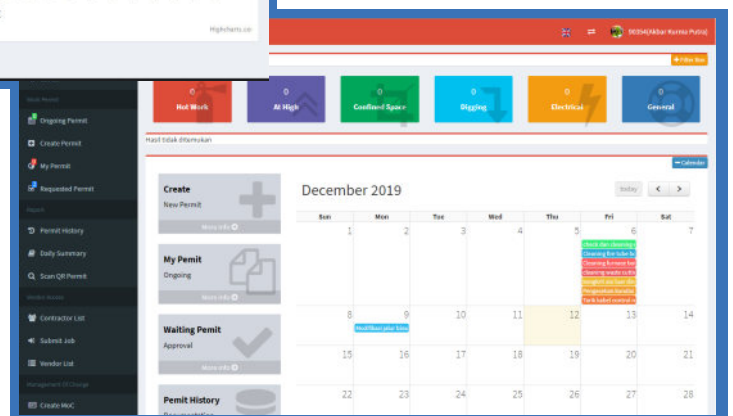
IOT Automatic Scheduler



OEE - Overall Equipment Effectiveness



Quality Control - Data Sampling



HSE - Permit

Rent

Click Link below

0 My Ordered Tool

0 Ongoing Invoice

0 Broken Tools

Order Logs

- to Closed Invoice
- Toolkeeper: Invoice [7] by Akbar has been updated to Closed Invoice (2020-04-02 13:32:01)
- KIA Team: Please process New Order [8] at (2020-08-17 15:07:47)

Tool Logs

- Akbar: updated to [available] (2020-04-03 15:00:01)
- [3] Kunci Sock (Trial/10) Status updated to [available]
- KIA Team: [5] Bor Tangan (Bosch/77k) Status updated to [booked] (2020-08-17 15:07:47)

PM Schedule

Date	Tools
2020-04-02	[T2004-00003-2011] Kunci Sock Trial - 10
2020-04-02	[T2004-00004-2104] Bor Tangan Bosch - 10

Problematic Tools

ID	Last Update	InvoiceID	Name	Brand/Type	Status	User	Action
No data							

EQUIPMENT NAME	CODE
BELT CONVEYOR SAND 01	RMA-BC-01

Tangan Terjepit **Terjepit Belt** **Jatuh dari Ketinggian**

Helm Keselamatan **Masker** **Sepatu Safety** **Full Body Harness**

No	Condition	Standard	Answer_Type
Motor BC 01			
1	Baut mounting	Tidak kendur	<input type="radio"/> YES <input type="radio"/> NO
2	Check ampere motor	3 Min: 0.00 Max: 5.00 Unit: Ampere	
3	Check condition of motor	Cooling fan, cover lengkap	<input type="radio"/> YES <input type="radio"/> NO
4	Check	40 °C LE Temp LE 70 °C	

Rental Tools



Maintenance - Checklist (Preventive Maintenance)

IOT - Production Monitoring

MTN Aiotku

All Log

No	Area/Machine	Status	Report
1	Code: RMA-BC-01 Machine: BELT CONVEYOR SAND 01 DownTime: 33 mins Stop Type: Unplanned Stop	Approved	Supervisor: 90354(Akbar Kurnia Putra) Problem: TEST Reported by: 90902(Debagga_2) Close Date: 2019-10-22 22:30:20
2	Code: MPL-WT-03 Machine: RETURN SLURRY WASHING TANK DownTime: 11 mins Stop Type: Unplanned Stop	Approved	Supervisor: 90443(Nessko Yolanda Dwi Purnapaner) Problem: 42.30 Timbangan Saturni skrupy error Di hrs terbacak 1558 Aktual di tankbaweighing lessing. Problem (skrupul 9 mudi) Reported by: 90443(Nessko Yolanda Dwi Purnapaner) Close Date: 2019-10-18 09:39:59
3	Code: CPU-SP-03 Machine: WASTE CUTTING CIRCULATING PUMP DownTime: 11 mins Stop Type: Unplanned Stop	Approved	Supervisor: 90443(Nessko Yolanda Dwi Purnapaner) Problem: 38.07 9048-show sirkulas waste cutting tank becora ulang pipa (spart before ada) Reported by: 90443(Nessko Yolanda Dwi Purnapaner) Close Date: 2019-10-08 09:39:59

MTN Aiotku

Sparepart Log

No	Code	Machine Name
1	RMA-BC-003	BC 96
2	RMA-BC-008	BC 08
3	RMA-BC-011	BELT CONVEYOR SAND 01
4	RMA-BC-014	Belt Conveyor Mortar
5	RMA-BC-015	BELT CONVEYOR SAND 02
6	RMA-BC-018	BELT CONVEYOR SAND 03
7	RMA-BC-014	BELT CONVEYOR SAND 04
8	RMA-BC-015	BELT CONVEYOR SAND 05
9	RMA-BC-016	BELT CONVEYOR SAND 06
10	RMA-BC-017	BELT CONVEYOR SAND 07

EQUIPMENT NAME/CODE	
BELT CONVEYOR SAND 01 RMA-BC-01	
1.1	BREAKER : Schneider LR0332 overload
1.2	BREAKER : Schneider LR0332 overload
1.3	BREAKER : Schneider LR0332 overload
3. TEST	Bearing 6309 22/C3 SKF
3.1	Bearing 6309 22/C3 SKF
3.2	Bearing 6309 22/C3 SKF

Maintenance - Devices and Parts

Abnormality Reports

Before	Detail	Report	Action
	2019-12-05 19:20:55 RMA-S-04 90368(Ak Pratiwi)	Karet kepung sudah rusak/terkikuk/jelek kepung lebar	Close
	2019-12-02 12:22:35 RMA-S-04 90128(Lud Sahadi)	Baut pengunci choker buke sika sarnit(balok) kendur dan tidak kencang.	Close

Ticket ID: 282, Last Update: 2019-12-01 10:31:41, Created by: 90443(Nessko Yolanda Dwi Purnapaner)

Requester: WHITE TAG

Risa di Alukan-rabi operator produksi
PIC: 90901(Nurhanik/90901) LuGa H42apU/90443(Nessko Yolanda Dwi Purnapaner)

Update Info by PIC:

2019-12-04 13:39:22 Motor no 2 tidak jalan (masalah di cart Du)

STORE Aiotku

Hand Glove White

Stainless Steel

Blackhead Pipe

Blackhead Pipe

Blue Tubing Pipe 4mm

Blue Tubing Pipe 4mm

Weld 40

Carbon Brush 085 T-200

Grinding Wheel 4

Grinding Wheel 4

Blowgun

Plastic Clear

Mask - Medical

Press Seal - Seal-Bit-DIG-42

Hand Glove White

Stainless Steel

Blackhead Pipe

Blackhead Pipe

Blue Tubing Pipe 4mm

Blue Tubing Pipe 4mm

Weld 40

Carbon Brush 085 T-200

Grinding Wheel 4

Grinding Wheel 4

Blowgun

Plastic Clear

Mask - Medical

Press Seal - Seal-Bit-DIG-42

Maintenance - Abnormality Report

Store - Desktop



Our Services

PLC, HMI, SCADA

- ▶ Automation Control & Mechanical Design
- ▶ New Automation System Project
- ▶ System Retrofit Upgrade & Modification
- ▶ Multi brand interconnecting system
- ▶ Control Panel Assembly
- ▶ Loop Test System
- ▶ Programming
- ▶ Start up & Commissioning
- ▶ Maintenance Contract & After Sales Service
- ▶ Troubleshooting

Automation Consulting

Parts & Components Supply

Field Devices

- ▶ Installment
- ▶ Troubleshooting

Control System Training

- ▶ PLC Basic & Advanced Training
- ▶ HMI Training
- ▶ Inverter Training
- ▶ Servo Training
- ▶ SCADA & Networking Training

Field Application

- ▶ Automotive Plant
- ▶ Food & Beverage
- ▶ Oil & gas
- ▶ Mining, Mineral & Cement
- ▶ Pulp & Paper
- ▶ Tire
- ▶ Consumer Goods
- ▶ Power & Energy Management
- ▶ Waste Water
- ▶ Steel Mill
- ▶ Chemical Plant
- ▶ Power Station
- ▶ Water Treatment Plant
- ▶ Process Plant
- ▶ Food Packaging
- ▶ Printing Machine
- ▶ Renewable Energy



Our Project

PT. Sparta Guna Sentosa

PT. Perkakas Rekadaya nusantara

PT. Alkindo Naratama Tbk

CV. Bangun Rahmat Teknik

PT. Dhanarmas Concern

PT. Fiper Rekatama Indonesia

PT. Indexindo Permai

PT. Indotek Mitra Kurnia

PT. Indo Gili Orzora

PT. Shiroki Indonesia

PT. Vonex Indonesia

PT. Kraft Ultrajaya Indonesia

PT. Mulia Boga Raya Tbk

PT. Power System Indonesia

PT. Shiroki Indonesia

PT. Tata Global Sentosa

PT. Tempsens Asia Jaya

PT. Tuffindo Nittoku Autoneum

PT. Furukawa Indomobil Battery Manufacturing

PT. Nagasaki Kurnia Textille Mills

PT. Toyota Auto Body - Tokai Extrusion

PT. Shinwa Nonwovens Indonesia

PT. SCG Lightweight Concrete Indonesia



Why Choose Us ?

Responsive

"We understand your time is precious, we'll respond with everything you needs"

Availability

"Always ready for your needs"

Knowledge

"Our knowledge in Automation Industry can help you to solve issues"

Portofolio

PT Sparta Guna Sentosa



CNC Lathe Focus

Replacement Axis X and Z Servo Motor
From Delta ASD-B2 to Mitsubishi
MR-JE use Syntec CNC Controller.



Induction Feeding

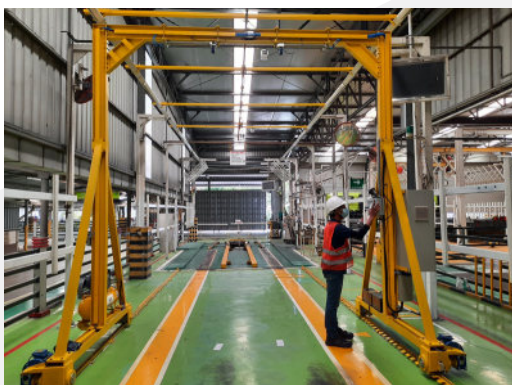
Integration system between Induction
feeding machine use Universal Robot (UR10)
with Siemens S7-1200 and Mitsubishi FX-3G
under modbus (RS-485) Communication.



Microsa Grinding

Conventional System to Fully automated
grinding for shaft workpiece with
Mitsubishi PLC Q-series , Servo MR-J4 ,
and Inverter FR-A800.

PT Wijaya Integrasi Wisdom



Whole Bend Quality Check Gantry

Bend Quality System using PLC FX-5U
and HMI GS-2107 Mitsubishi



Contact Us:

PT Savisi Jaya Solusi

Perum Permata Buah Batu
Blok G No.30 Bojong Soang,
Kabupaten Bandung, Indonesia
Phone +62(22) 8750-8008
Email: sales@savisi.co.id

“Thank You for Choosing Us”